



INSTRUMENTATION TECHNICIAN

\$33.83 - \$40.92 PER HOUR

Recruitment Closes Friday, May 30th, 2025 at 5:00 p.m.





INSTRUMENTATION TECHNICIAN

POSITION SUMMARY

The District is hiring a full-time Instrumentation Technician to join the Water Treatment Facility Maintenance Department under the supervision of the Water Treatment Assistant Superintendent. Responsibilities include troubleshooting, maintaining, and installing instrumentation, as well as performing routine maintenance tasks across the water treatment facility, distribution system, and raw water collection system in pursuit of the District's objectives by performing the following duties.

ESSENTIAL DUTIES AND RESPONSIBILITIES

The following essential job functions are illustrative only and are not intended to be all-inclusive. Duties may be modified, added, or deleted at the discretion of management.

- Responsible for semi-skilled and skilled troubleshooting, maintenance, and upkeep of the water treatment facility and source water infrastructure.
- Performs the instrumentation essential functions and responsibilities of the Water Treatment Assistant Superintendent during absences or as assigned.
- Assists in the installation and validation of new controls equipment and monitoring software.
- Maintains electromechanical equipment such as flow meters, pressure transducers, variable frequency drives (VFDs), and online analyzers per preventative maintenance schedules and on an emergency basis.
- Performs Programmable Logic Controller (PLC), Remote Terminal Unit (RTU), Human Machine Interface (HMI), and other programmable device edits.
- Investigates, troubleshoots, and corrects problematic controls equipment.
- Maintains and provides detailed records of work completed on all instrumentation systems.
- Works daily with the Plant Mechanic and Operations Maintenance Technician positions.
- Works safely around chemicals including chlorine, liquid ammonium sulfate, caustic soda, polymers, aluminum sulfate, hydrofluosilicic acid, powdered activated carbon, and copper sulfate.

THE IMPORTANCE OF THE INSTRUMENTATION TECHNICIAN

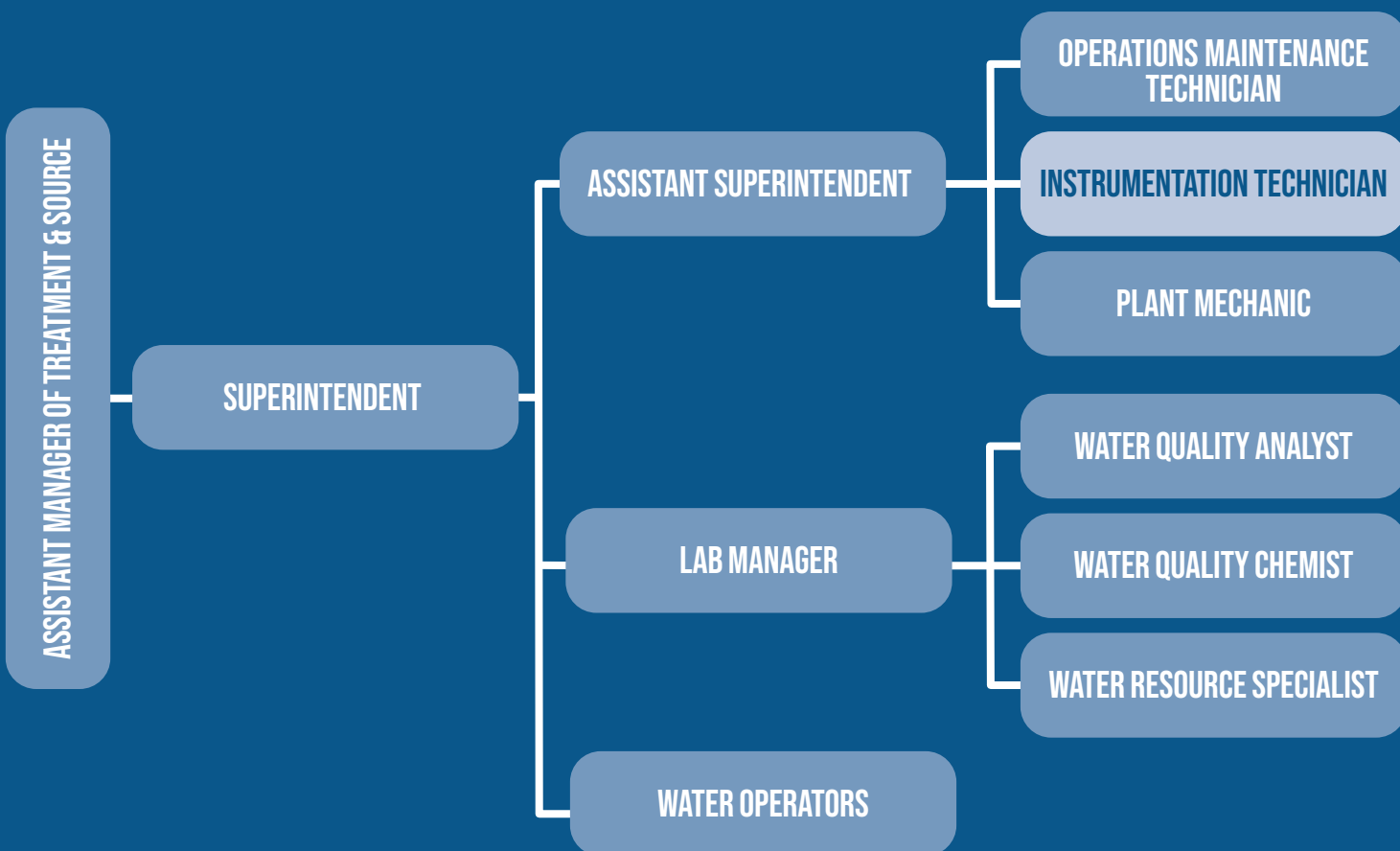
While the day-to-day responsibilities of the Instrumentation Technician may vary, this position plays a key role in performing both skilled and semi-skilled maintenance tasks to ensure the reliable operation of the District's assets. One day might involve cleaning and calibrating analyzers in the distribution system or raw water collection network, and the next day could focus on changing the oil in flocculators.

Indoor tasks include technical work such as editing HMIs and PLC logic while outdoor challenges may involve creative problem-solving such as developing solutions to thaw a frozen raw water intake.

Additional responsibilities encompass essential routine duties. These include preventative maintenance of online analyzers, calibration and verification of instrumentation, and ensuring data is properly backed up and accessible.



WATER TREATMENT FACILITY ORGANIZATION CHART



PAY AND BENEFITS

This is a non-exempt position with a competitive benefits package. The pay range for this position is \$33.83 to \$40.92 per hour.

REQUIRED

- High school diploma or general education degree.
- A minimum of one (1) year of experience in industrial controls.
- A valid Colorado Driver's License, in good standing, with insurability under District insurance standards.
- A valid State of Colorado Class "D" Water Treatment Operator certification or obtains such certification within two (2) years from the date of hire into the position.

PREFERRED SKILLS

- Certificate or degree with education in industrial controls, instrumentation, or directly related field from an accredited institution.
- Experience with or certifications in Rockwell/Allen Bradley Automation software and components.
- Water treatment facility experience.

Any equivalent combination of certifications, education, or experience that provides the required skills, knowledge, and abilities of the position.

BENEFITS PACKAGE



Medical Insurance

3 Insurance plan choices, 2 of which 100% of the premium is paid by the District



Dental Insurance



Vision Insurance



Retirement

401(a) and 457(b) plans with employer match up to 10%



Supplemental Insurance



Life Insurance

Company paid and voluntary life insurances



Flexible Benefit Plan

\$600 annual employer contribution to Health Savings Account



Education Assistance



Paid Leaves

Statutory and other generous paid leaves



Employee Assistance Program

And more, including bonuses, on-the-job training, and department specific allowances and reimbursements.



HOW TO APPLY

Visit the District's careers page at utewater.org/careers to preview the Instrumentation Technician position's job description for details regarding the essential duties, responsibilities, and qualifications requirements.

If qualified, please submit the following documents to be considered for the Instrumentation Technician position:

Employment Application

Supplemental Questionnaire

The deadline to apply for this recruitment is **Friday, May 30th at 5:00 p.m.**

Please submit all materials either:

In Person

2190 H ¼ Road, Grand Junction, CO 81505

Mail

PO Box 460, Grand Junction, CO 81502

Email

hr@utewater.org

The District is an Equal Opportunity Employer. The candidate selected for employment must possess a valid Colorado Driver License and pass a drug screen, physical, background and reference check.

If you have questions regarding pay, benefits, the position, or the recruitment process, please contact human resources at (970) 242-7491 or hr@utewater.org.

WORKING AT UTE WATER

Why do we want the best water around? Because it's our water too. For 69 years, we've treated the snowmelt found on the Grand Mesa and a few other sources to make it the freshest we can. That's the absolute truth.

Founded by a group of farmers who fought to bring domestic water services to the rural areas of the Grand Valley outlying the Town of Palisade and City of Grand Junction, Ute Water Conservancy District (District) was founded to serve the community with clean, drinkable water.

Today, the District is recognized as the largest domestic water provider between Denver, Colorado, and Salt Lake City, Utah. 90,000 Grand Valley residents rely on our employees to provide them with high quality water and reliable service.

The process of capturing freshly fallen snowmelt from the Grand Mesa is one that makes the District unique and is admired by other water providers across the nation.

The Grand Mesa, also recognized as the world's largest flattop mesa, is the primary watershed for the District, and the gravity-fed system that delivers the pristine snowmelt to the customer's tap is unique to the District.

Knowing that some of the best water professionals play an integral role of delivering high-quality water to your tap makes our process one of the best around. Each drop of water that comes out of the tap has originated from the Grand Mesa and is brought to our customers by dedicated employees who help capture, move, treat, and distribute the water to our customers' homes.



THE GRAND VALLEY

Home of Ute Water Conservancy District

Named for its enviable location at the confluence of the Colorado and Gunnison rivers, Grand Junction is a special kind of crossroads – a joining of ancient and modern, rustic and refined, and nature and culture. Grand Junction provides experiences you will not find anywhere else in the world. With a population of 66,900, it is the largest city between Denver, Colorado and Salt Lake City, Utah. Grand Junction is home to the Colorado National Monument, the Grand Mesa, and a large section of the Bookcliff Mountain Range. Mild weather and sunny skies create endless opportunities to enjoy the outdoors with whitewater rafting, mountain biking, hiking, horseback riding, fishing, hunting, golfing, skiing, and snowboarding. Grand Junction is home to Colorado Mesa University and its 11,000

students, the Grand Junction Jackalopes, and the Junior College World Series.

Grand Junction is a laid back, friendly city with an authentic downtown mountain vibe where locals and visitors come together to enjoy local art, boutiques, restaurants, seasonal farmer's markets, and festivals. If you travel about 13 miles to the east of Grand Junction, you will find yourself in Palisade, Colorado's wine country, home to over 20 local wineries and the world-famous Palisade Peach.

With an abundance of opportunity for continuing education, recreation, shopping, wining, and dining, Grand Junction offers a culture that prioritizes family and community, making it a great place to live, work, and play.



WATER
Conservancy District